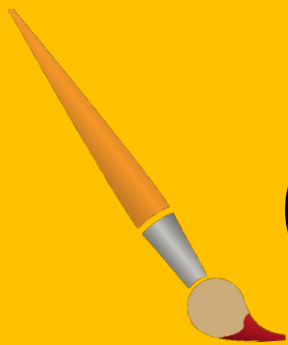


**Dunedin Fine Art Center**  
**Summer Art Academy**



**2026**  
**Parent**  
**Welcome**  
**Pack**



# Summer Camp General Information

## **Sign In/Out:**

Children must be signed in and out daily by their parent/ guardian or authorized pick up persons on your child's file. **PHOTO ID will be required for pick up!** No child will be released from our programs to anyone other than the registering parents/guardian or other authorized pick up persons on your child's file, without a written signed and specifically dated consent slip from the registering parent/guardian.

## **Hours:**

**All camps run:** 9:00 am – 3:00 pm.

**Aftercare:** 3:15 pm – 5:30 pm

**Drop off:** 8:30 am – 9:00 am

**Pick Up:** Promptly at 3:00 pm ( you may come as early as 2:50 pm if necessary.)

## **Lunch/Snacks:**

Bring a healthy lunch, snack and labeled drink bottle daily. (Bring 2 snacks if in Aftercare.)

\*No heat up lunches\*

## **Tuition:**

Full tuition is due at time of registration. **Tuition is Non-Refundable!**

Changes in camps or weeks are subject to availability and need to be made 2 weeks in advance to avoid a \$25.00 administrative fee.

## **Camp Clothing:**

Dress for the mess! Your child will be busy using a variety of art materials and many of them are a bit messy, but that's all part of creativity and fun. Dress in clothes that you don't mind getting dirty. Closed toed shoes are advised as the children will be traveling to several different classes each day depending on their camp. *They may also have a little outdoor/ fresh air time during the day at the Instructors discretion.*

## **Medical or Allergy Concerns:**

Please make sure that any medical or allergy concerns are in our system upon registration. If your child requires medication or has an Epi pen, please stop by the Youth Education desk to fill out a medication form. Our staff are not allowed to administer medication with the exception of Epinephrine auto-injector as required. The medication will be kept at the Youth Education desk. Please remember to pick it up at the end of the week.

## **Behavior Expectations (Safety First):**

We look forward to everyone having a fun, happy, memorable, safe experience at DFAC's summer camps. Please remind your child to exhibit positive camp behavior, be respectful, follow camp rules and make good behavior decisions.

***\*Students who demonstrate unfavorable behavior and/or persistent behavior problems will be removed from class for the safety of everyone, and Parents/Guardians will be contacted. This may result in the child being immediately picked up and/or permanent removal from our summer camp programs at the discretion of the Youth Education Director and/or CEO.***



# Reminders & Tips

## Artwork:

- Please put your name on all of your artwork (including clay pieces).
- Remember to take home all artwork by the end of each week. We are unable to keep or store any left over items after camp is over in August.

## Clay Pieces- Sizzling Summer & Art Squad camps:

- Make sure to put your name on the bottom of each piece so it is easily identified upon pick-up.
- Take home any finished, fired pieces by the end of the week. **Pick up any remaining pieces on Thursday of the following week** as they get fired over the weekend and need time to cool down. Clay pieces will be on labeled shelves outside of the clay studios.

## Personal & Electronic Items:

- Please be sure to label all personal items. Electronic devices are discouraged due to class interruptions, loss or damage to property and lack of participation during class. Phones should be put away during class time, unless otherwise directed by the Instructor.

## All Camps:

- Be on time so that you do not miss any directions or important information for your projects and/or use of equipment. Give us a call if your child will be out or running late.
- **Arts in Motion and Mural camp** are depending on you to be there daily for final touches and/or performances as you are part of the team.
- **iPad campers** need to be sure that they are treating the iPads with respect and following instructions on usage.
- **Art Squad: ( Wheel, Darkroom, Photoshop & Mixed Media)**  
This camp uses expensive equipment, chemicals and motor driven equipment that needs to be treated with respect to keep them clean, safe and operational. **Often times there is an air of seriousness associated with these processes due to safety concerns and necessary step-by-step instructions to be successful.**

**We look forward to seeing you  
soon!**

